

Open Space and Recreation Planning



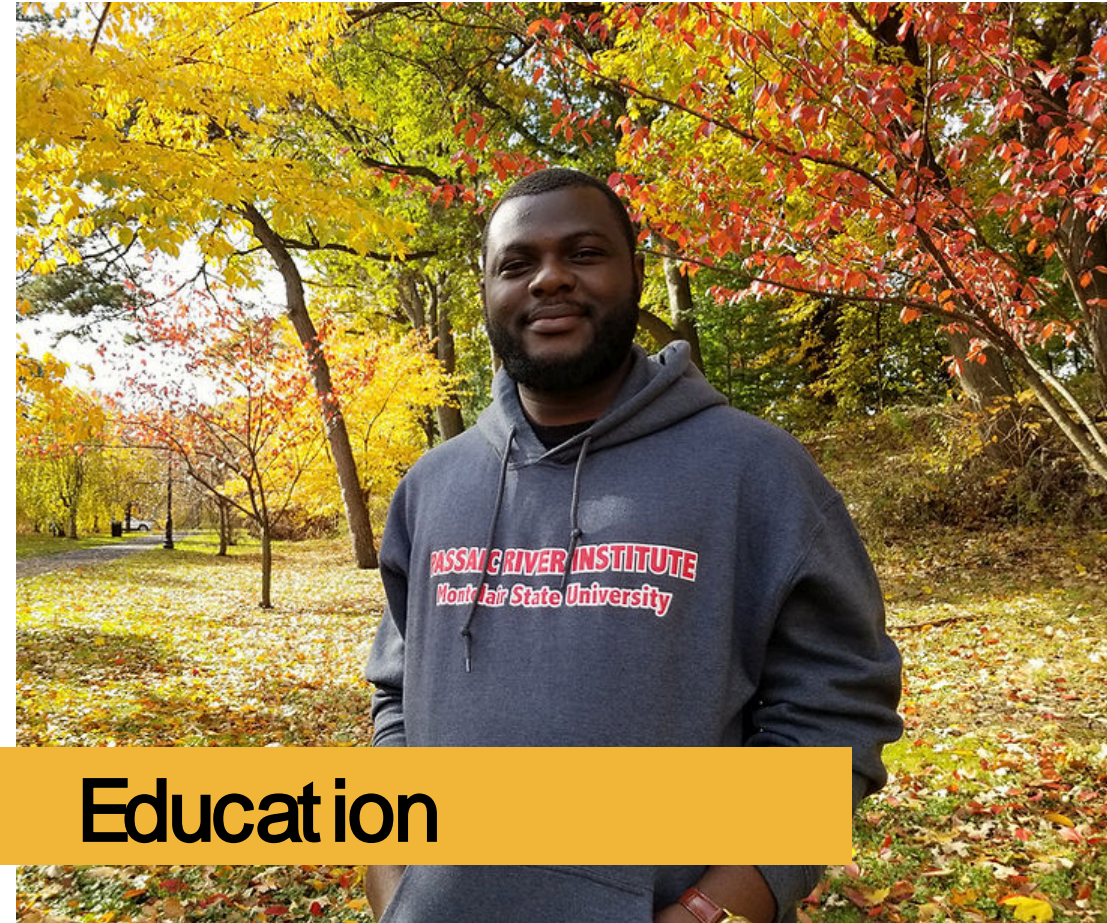
Sparta Township Environmental Commission

August 10, 2023

WHO WE ARE

THE LAND CONSERVANCY OF NEW JERSEY

We preserve,
restore, and care
for land and water
resources,
inspiring and
empowering
individuals and
communities to
protect open
space.



Education



Stewardship



Municipal Services



Land Preservation

Statewide Impact

- ❖ 200 land conservation plans completed
- ❖ 100 Open Space Plans
- ❖ \$255 million in grants for towns to fund acquisition projects
- ❖ 75 municipalities in 13 counties have completed plans with TLCNJ

Sussex County

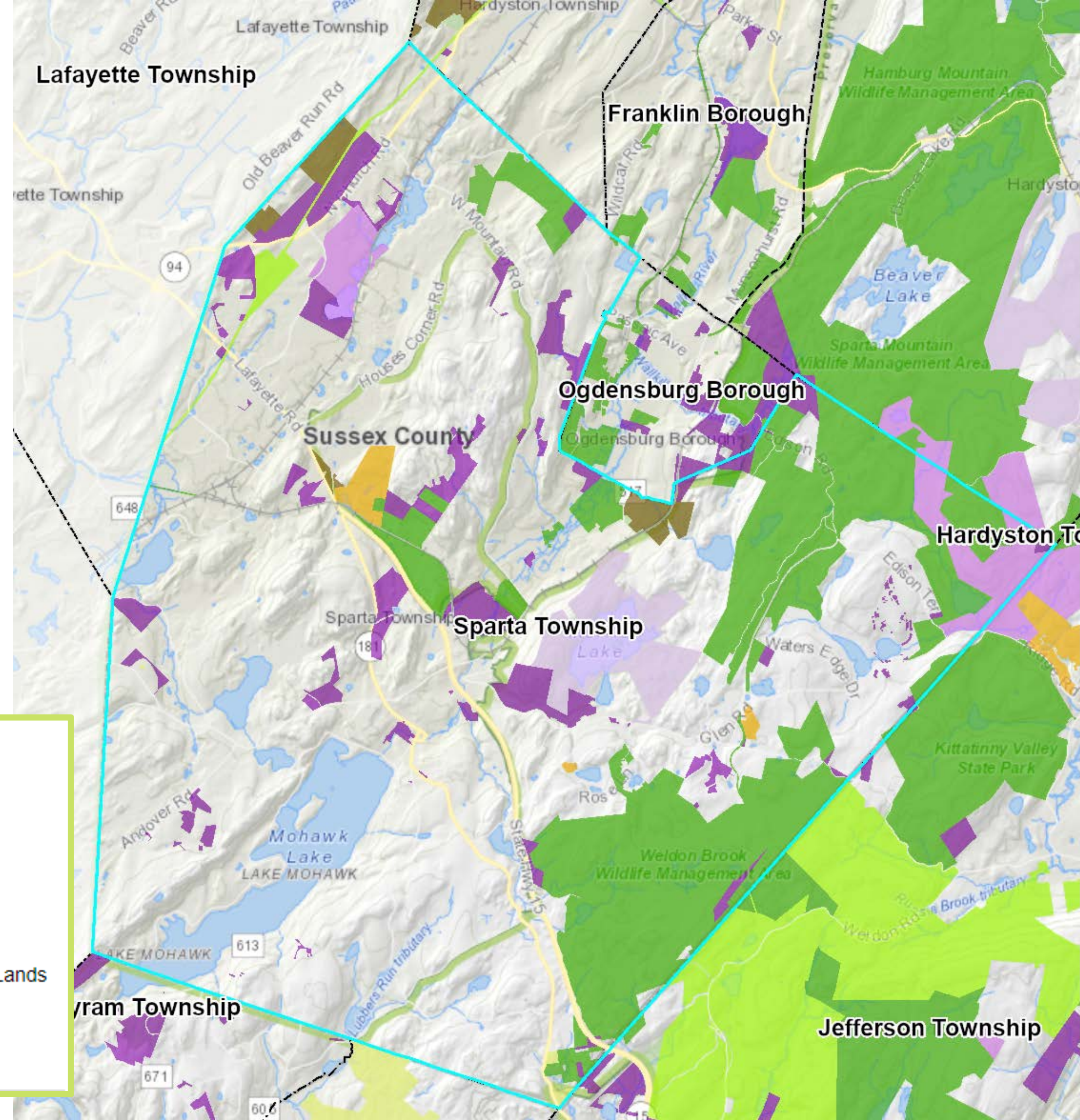
- ❖ Completed Sussex County's:
 - ✓ 2003 and 2016 Open Space Plans
 - ✓ 2008 Farm Plan
- ❖ In Sussex County TLCNJ has written:
 - ✓ 18 Open Space Plans
 - ✓ 4 Farm Plans
 - ✓ 4 Trail Plans
 - ✓ 1 Environmental Resource Inventory
 - ✓ 1 Watershed Plan

THE LAND CONSERVANCY
OF NEW JERSEY

Sparta Township

home to:

- Weldon Brook WMA
- Sparta Mountain WMA
- Pimple Hills State Park
- Kittatinny Valley State Park
- Sparta Glen Park
- Wildcat Branch Preserve
- Russia Brook Sanctuary
- Wallkill Preserve
- Lockburner Estate
- Mohawk Lake
- White Lake
- Morris Lake



Why update the Open Space Plan?

The Township's current Open Space Plan (1996) is out of date.

Completing an Open Space Plan yields 10 points towards Sustainable Jersey Certification.

The Plan identifies locally important lands for conservation and protection.

The Update will keep the municipality current for 10 years for matching funds through the Green Acres program.



Photo: Bear Creek Preserve, View of Jenny Jump Ridge

The goals of the Township's 2012 Open Space and Recreation Plan were largely informed by a public survey conducted in 2008. Residents identified protection of their water and rural landscape as priorities for the open space program. These goals have been adapted for this 2023 Update, and are distinguished by the following three categories:

PROTECT AND CONNECT

Connect **greenways** of preserved lands and public open spaces to reduce fragmentation of wildlife habitat and the forested hillsides.

Support the **farmer**, their farm, and the locally grown products they provide.

Expand the **bicycle and trail** system, where appropriate, to offer safe, healthy alternatives for accessing and enjoying the public parklands.

STEWARD

Recreational lands with an eye towards improving stewardship of undeveloped public lands to ensure their sustainability and resiliency.

Unique **natural areas** and water resources for their wildlife habitat value, their recreational opportunities, and to safeguard water quality and water supply lands.

SUSTAIN

Four season **tourism** opportunities.

The town's capacity for receiving outside **funding** for open space.

Municipal funding for future **acquisitions**.

Historic and cultural sites that form the backdrop of the town's scenic beauty.

Goals of the Open Space Program

An outline of the community's open space vision for conservation and preservation.

Welcome to the
FRELINGHUYSEN
NEW JERSEY



HISTORY

OF THE OPEN SPACE PROGRAM

2001

Governing body implemented the tax levy for open space at 1/2 cent

2007

The Borough received \$673,767 from Green Acres to acquire the former Datascope property now known as the Environmental Learning Center

2016

Memorial Park Swim Club closes

2022

The Borough designated a former school located on East Grand Avenue as a local historic landmark

2022

Open Space & Recreation Plan underway

1999

Voters approved an open space tax levy for recreation, conservation, and historical/cultural site preservation

2001

The Borough received \$285,000 from Bergen County to acquire the former Datascope property

2008

Master Plan including elements on:

- Conservation
- Recreation
- Open Space
- Historic Preservation

2018

The former Memorial Park Swim Club property is reevaluated for park space in Montvale's 2018 Town Survey

2022

The Borough purchased the 28-acre Summit Avenue property for open space and development of inclusionary housing

History of the Open Space Program

A record of the municipal Open Space Trust Fund, open space and recreation grants received by the town, and past bond financing

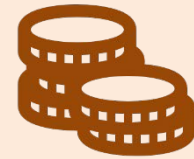


BOROUGH OF
MONTVALE
NEW JERSEY

Municipal Open Space Trust Fund



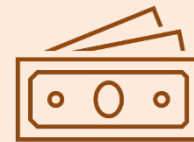
Established by voter referendum in 1995



Tax levy is 1 ¢ per \$100 of assessed value



\$5,984,429 collected to date



\$5,795,182 expended to date



\$189,573 balance



498 acres preserved to date

Map 1: Preserved & Public Lands
Chester Borough, Morris County

Open Space Inventory

An overview of preserved, public, and private land in the community & their potential for open space.

Legend:

- ★ Municipal Building
- State Parks and Open Space
- County Parks and Open Space
- Preserved Municipal Open Space

An overview of preserved, public, and private land in the community & their potential for open space.

 Municipal Building
 State Parks and Open Space
 County Parks and Open Space
 Preserved Municipal Open Space

Historic Sites on the State and National Registers in Chester Borough

The following sites and those described below are listed on the state or national historic registers, indicating broader significance and opening opportunities for funding. Additional properties have been recognized as eligible by the State Historic Preservation Office (SHPO) through the proposed Historic District, but some owners of those properties objected to their inclusion and prevented them from being listed.

Name	Location	National Register	State Register
Chester Historic District	NJ-24, Main Street, Maple Avenue, Grove Street, and Hillside Road	-	9/25/2001*
Chester House Inn	Main Street and Hillside Road	7/18/1974	11/26/1973
First Congregational Church	30 Hillside Road	8/10/1977	8/2/1976
First Presbyterian Congregation of Chester	220 Main Street	-	3/28/2005*
Isaac Corwin House (Larison's Turkey Farm Inn)	2 West Main Street	-	9/25/2001*
Rockefeller Center	Municipal Field	Pending*	Pending*
* acknowledged by the State Historic Preservation Office, but not yet listed on the state register			

Source: NJ State Historic Preservation Office and National Register of Historic Places

Historic and Cultural Resources



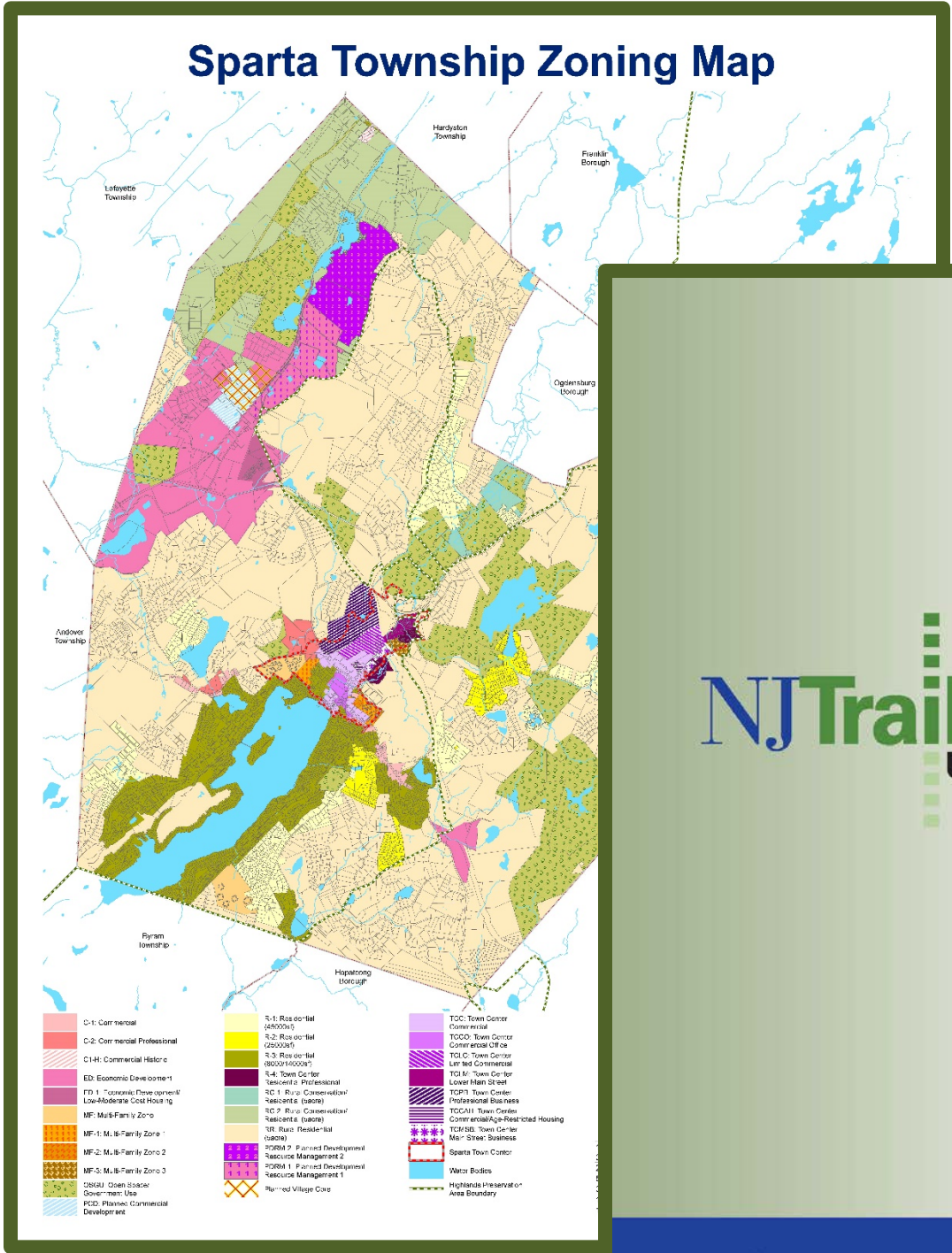
Leek House




An inventory of local, state, and federally significant historic and cultural resources within the municipality or county.


Planning Consistency

A summary of municipal, county, and state plans relevant to the Open Space and Recreation Plan.





NJ Trails Plan Update



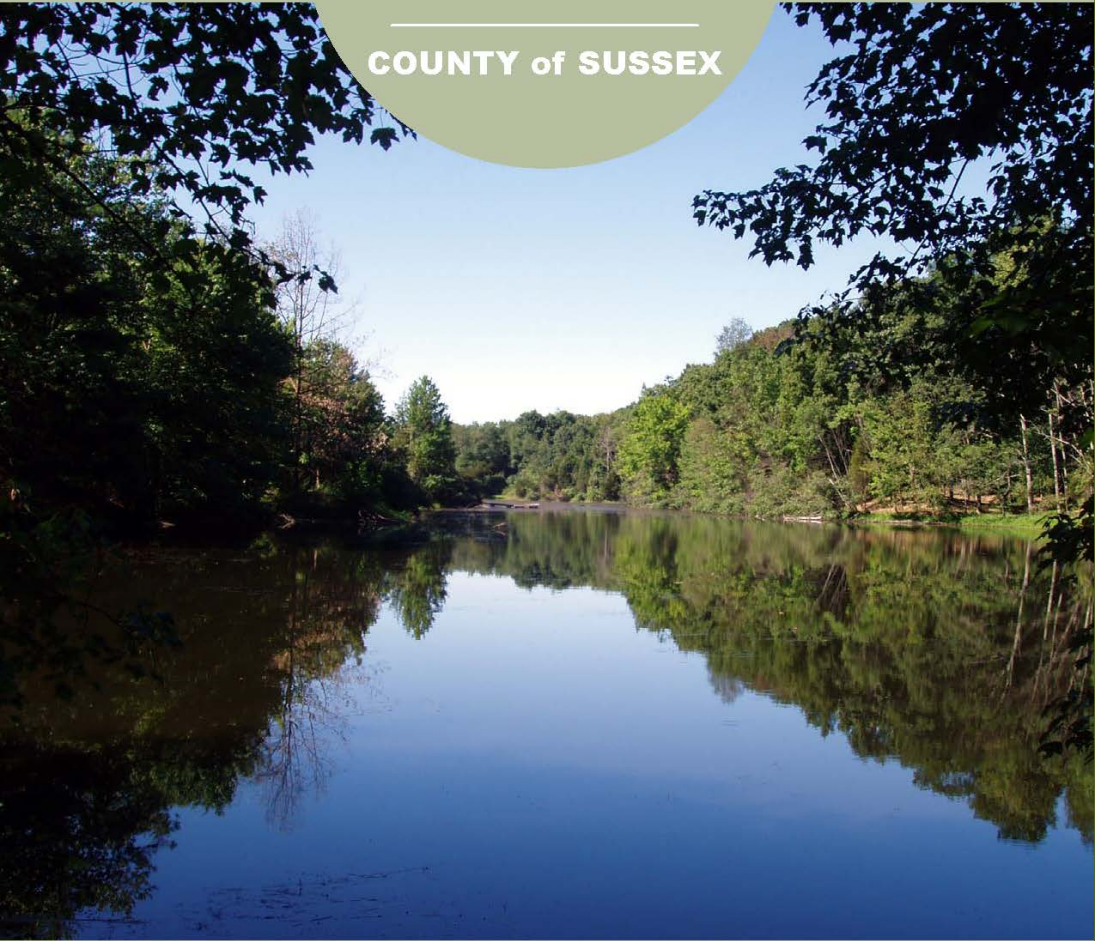
A Vision and Action Plan for New Jersey's Future


March 2009

The New Jersey Department of Transportation


OPEN SPACE AND RECREATION PLAN UPDATE: CONSERVATION AND STEWARDSHIP

COUNTY of SUSSEX





AUGUST 2016



Prepared for:
Sussex County
Board of Chosen Freeholders
Open Space Advisory Committee

Funded by a Catalyst Grant from the Open Space Institute's Delaware River Watershed Protection Fund



Recreation Resources

Existing recreation
resources and facilities,
programming, expected
demand, and potential
solutions for unmet needs

WELCOME TO THE BOROUGH OF

Alpha, NJ

Preservation Recommendations

A System of Open Space

Community Benefits of Open
Space Preservation

Greenways





Action Plan

A set of strategies and a timetable to implement the goals and recommendations within 1-year, 3-years, and ongoing timeframes.

SHORT-TERM

To be completed within one year



LONG-TERM

Work with the County Chamber of Commerce to examine eco-tourism initiatives and "green" economic development.

ONGOING

Celebrate and publicize all successful open space projects with community events.

Continue to offer ongoing and diverse recreational programs for all Township residents.

Promote best management practices near environmentally sensitive lands, including rivers, streams and wetlands.

Continue to apply for and investigate grant opportunities to protect the Township's open space areas.

Schedule and Deliverables

 = We are here



Green Acres Guidelines

For updating Municipal
Open Space and
Recreation Plans



The Open Space Plan relies on the latest municipal data for revenues/expenditures and priorities for preservation.



The Township can apply for a grant from the Highlands Council to cover **100%** of the cost to update the Open Space Plan.



An Open Space Plan allows the Township to qualify for Green Acres Planning Incentive Grant funding:

<https://www.nj.gov/dep/greenacres>

Benefits of Open Space

- »»» Contributes to quality of life
- »»» Encourages physical activity
- »»» Contributes to a tourism and recreation economy
- »»» Enhances homeowner property value

- »»» Improves air quality
- »»» Provides storage of carbon in trees to combat climate change
- »»» Maintains wildlife habitat for plants and animals
- »»» Mitigates local flooding and improves water quality



TRAIL
MAPS

Thank You

Barbara Heskins Davis, PP, AICP
The Land Conservancy of New Jersey
bhdavis@tlc-nj.org